



**REGIONAL SPECIALISED METEOROLOGICAL CENTRE-TROPICAL CYCLONES, NEW DELHI
TROPICAL WEATHER OUTLOOK**

DEMS-RSMC TROPICAL CYCLONES NEW DELHI DATED 09.11.2024

TROPICAL WEATHER OUTLOOK FOR THE NORTH INDIAN OCEAN (THE BAY OF BENGAL AND THE ARABIAN SEA) VALID FOR THE NEXT 168 HOURS ISSUED AT 0600 UTC OF 09.11.2024 BASED ON 0300 UTC OF 09.11.2024.

BAY OF BENGAL:

Yesterday's cyclonic circulation over southwest Bay of Bengal extending upto 3.6 km above mean sea level persisted over the same area at 0300 UTC of today, the 09th November 2024. Under its influence, a low-pressure area is likely to form over the same area during the next 36 hours. It is likely to move slowly nearly westwards towards Tamil Nadu/Sri Lanka coasts during the subsequent 2 days.

Scattered to broken low and medium clouds with embedded intense to very intense convection lay over South Bay of Bengal, East-central Bay of Bengal, Andaman Sea, and Gulf of Martaban. Scattered low and medium clouds with embedded weak to moderate convection lay over West-central Bay of Bengal.

***PROBABILITY OF CYCLOGENESIS (FORMATION OF DEPRESSION) DURING NEXT 168 HRS:**

24 HOURS	24-48 HOURS	48-72 HOURS	72-96 HOURS	96-120 HOURS	120-144 HOURS	144-168 HOURS
NIL	NIL	NIL	NIL	NIL	NIL	NIL

***NOTE: EVERY 24HR FORECAST IS VALID UPTO 0300 UTC (0830 IST) OF NEXT DAY**

ARABIAN SEA:

Yesterday's cyclonic circulation over the southeast Arabian Sea & adjoining Lakshadweep area lay over central parts of south Arabian Sea at 3.1 km above mean sea level at 0300 UTC of today, the 09th of November, 2024.

Scattered low and medium clouds with embedded intense to very intense convection lay over South Arabian Sea, and moderate to intense convection lay over west-central Arabian Sea, Maldives and Comorin area.

***PROBABILITY OF CYCLOGENESIS (FORMATION OF DEPRESSION) DURING NEXT 168 HRS:**

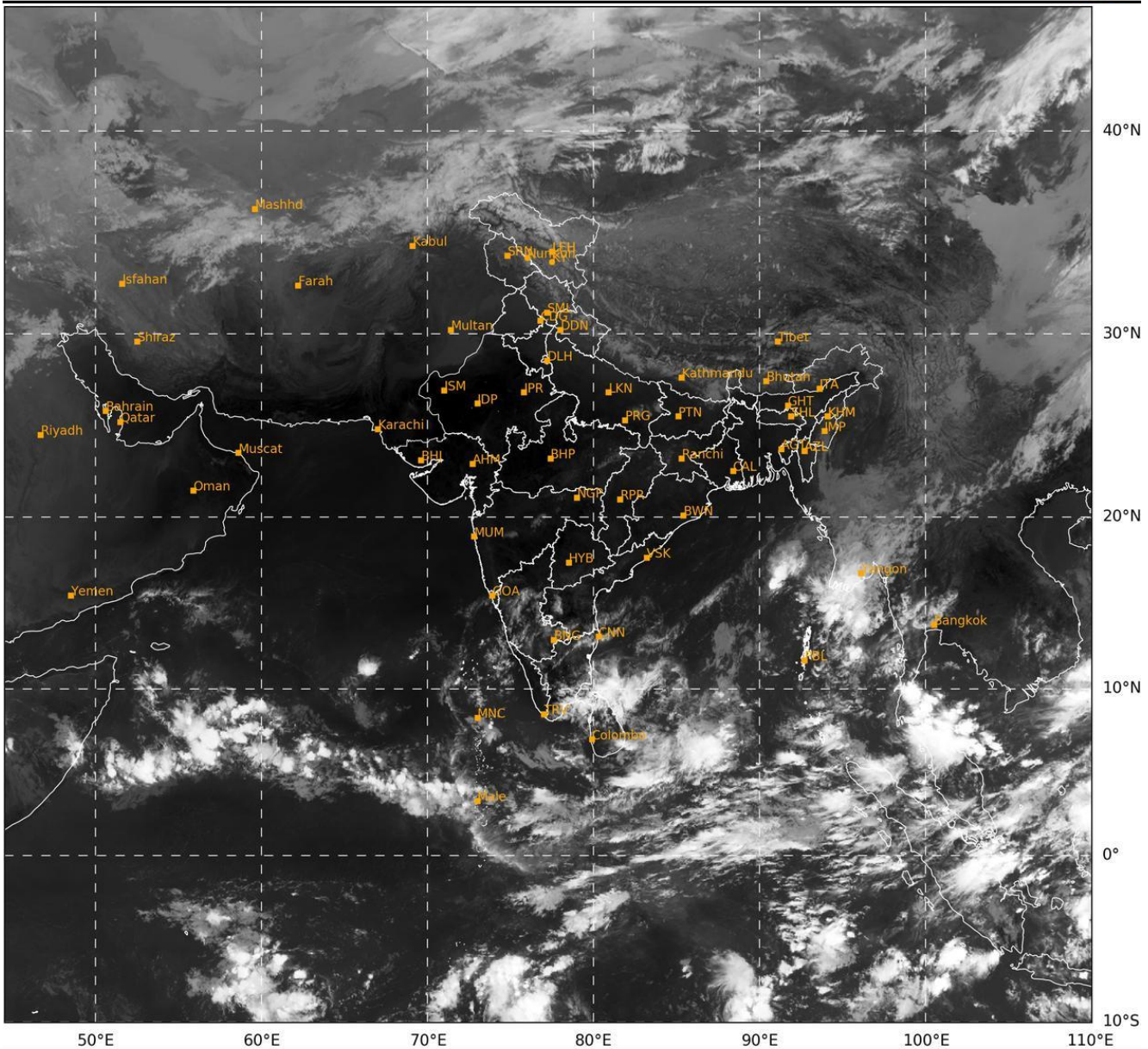
24 HOURS	24-48 HOURS	48-72 HOURS	72-96 HOURS	96-120 HOURS	120-144 HOURS	144-168 HOURS
NIL	NIL	NIL	NIL	NIL	NIL	NIL

***NOTE: EVERY 24HR FORECAST IS VALID UPTO 0300 UTC (0830 IST) OF NEXT DAY**

REMARKS: NIL.

SAT : INSAT-3DR IMG
 IMG_TIR1 10.8 um
 LIC Mercator

09-11-2024/(0415 to 0442) GMT
 09-11-2024/(0945 to 1012) IST



IMD,DELHI

Cloud distribution: (a) Isolated: <25%, Scattered:25-50%, Broken: 51-75%, Solid:>75%, Convection Intensity: (a) Weak: Cloud Top Temperature (CTT) >-25°C, (b) Moderate: CTT: - 25°C to -40°C, (c) Intense: CTT: - 41°C to -70°C and (d) Very Intense: : Less than -70°C
PROBABILITY OF CYCLOGENESIS (FORMATION OF DEPRESSION):NIL: 0%, LOW: 1-33%, , MODERATE: 34-66% AND HIGH: 67-100%
 This is a guidance Bulletin for WMO/ESCAP Panel Member countries. Visit respective National websites for Country specific Bulletins